

SmartCAM FreeForm/Modeler Pack™

for Microsoft® Windows NT™ & Windows 95™

*A complete modeling
and machining
solution for
moldmaking,
tool & die making,
prototyping, and
complex part
machining.*

SmartCAM FreeForm/Modeler Pack

The SmartCAM FreeForm/Modeler Pack™ pairs the speed and flexibility of SmartCAM FreeForm Machining™ with the powerful Camand® Modeler. You have everything you need to create and edit models of parts and tooling, build and verify toolpaths, and generate accurate, machine-ready CNC code. It's the ideal solution for mold, tool & die, and prototype work as well as complex part making.

Modeling Your Part

The SmartCAM FreeForm/Modeler Pack helps you create manufacturable 3-D models quickly. You can rely on Modeler to construct new wireframe or surface models or to import electronic data to be finished or modified. Missing geometric entities required to produce a prototype or accurately program the part for machining can be enhanced to complete the model.

Superior Surface Modeling

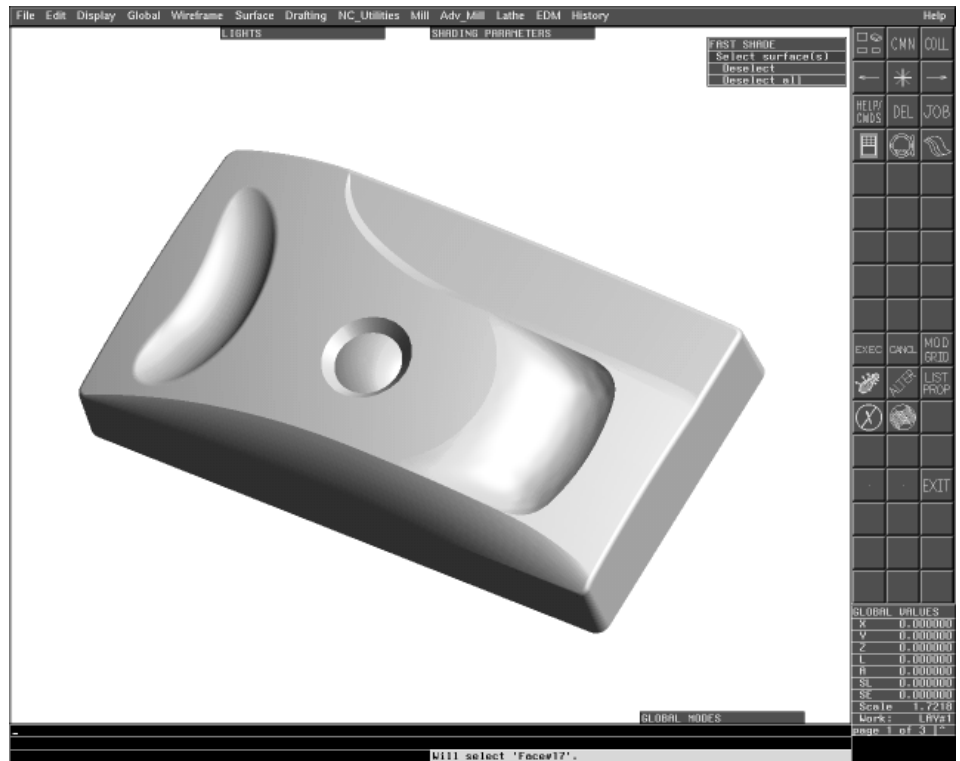
The Modeler offers a set of free-form and constructive NURBS surface types. Surface construction techniques include combining surface shapes and then trimming them to each other to form the desired surface model. Surface types supported by the Modeler include revolved, tabulated, and ruled constructive surfaces as well as swept, patch, lofted, mesh of curves, blend, and constant and variable radius fillet surfaces.

Surface editing functions include automatic surface trimming and untrimming, blending between surfaces, forcing tangency between surfaces, splitting surfaces along iso-parametric curves, automatic generation of parting lines,

and local deformation of surfaces. Surface smoothing and data reduction are also available.

Creating CNC Processes

Once the model is complete you can directly transfer it to FreeForm to generate the tool-path and NC processes required. FreeForm provides multiple surface and solids-based machining for a full range of milling requirements, from 2-axis work to complex 3-axis molds, dies and prototypes. FreeForm is the fastest gouge-free machining system available and will optimize your machining processes for even faster machining time. Because you are modeling CNC processes, not just toolpath geometry, you're able to create the most efficient machining methods possible.



SmartCAM FreeForm/Modeler Pack provides powerful, 3-D modeling.

FreeForm gives you comprehensive roughing, finishing, pocketing, profiling, and drilling solutions that help you get the job done fast, including:

- Gouge-free rough, contour, and finish machining.
- Parallel plane straight-line machining across multiple surfaces, uphill-only cutting, and Z-increment roughing, with climb and conventional cutting options.
- Containment boundaries.
- Projection machining, onto or offset from any group of surfaces.
- Intuitive pocketing using spiral, linear or zigzag routines.
- Parting lines.
- Subroutine support.
- Automatic toolpath optimization for the shortest possible machine cycle time.
- Solid cutter verification to show you exactly how your part will be cut on your machine.
- Custom tool graphics to help you visualize special tools.

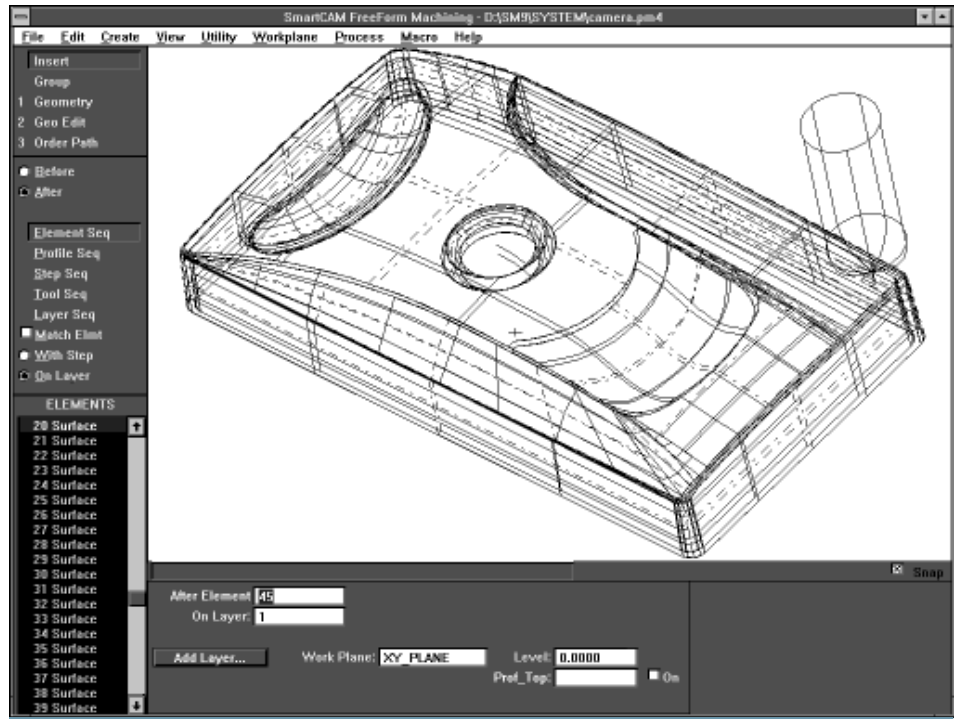
Shorten Your Delivery Times

SmartCAM's unique Job Operation Planner helps you organize and store information about tooling and machining operations. You not only save time on a current job, but you also capture proven machining methods to reuse for time savings on future work.

The SmartCAM FreeForm/Modeler Pack – from the user interface to the way code is output – can be customized to streamline your work and address your business needs. The bottom line is that you get products to market faster than ever before.

Call Today

For more information on how the SmartCAM FreeForm/Modeler Pack can contribute to your productivity and profits, call your local CAMAX dealer. For dealer information, contact CAMAX at (800) 394-5300 or (612) 854-5300.



SmartCAM FreeForm/Modeler Pack automatically generates toolpaths and NC processes.

SmartCAM FreeForm/Modeler Pack System Requirements

Computer	Minimum	Pentium 90
Operating System		Microsoft Windows 95 or Windows NT
Physical RAM	Minimum	64 Mb
	Recommend	96 Mb
Swap Space	Minimum	100 Mb
	Recommend	160 Mb of permanent swap space
Disk Space		100 Mb for installation
Other Devices		CD-ROM drive

CAMAX
SDRC's CAM Business

7851 Metro Parkway
Minneapolis, MN 55425-1528
Phone: (612) 854-5300
Fax: (612) 854-6644
Web address: www.camax.com

SmartCAM and Camand are registered trademarks, and CAMAX, SmartCAM FreeForm/Modeler Pack, and SmartCAM FreeForm Machining are trademarks of CAMAX Manufacturing Technologies, Inc., a wholly-owned subsidiary of Structural Dynamics Research Corporation.
All other trademarks or registered trademarks belong to their respective holders.

©1997 SDRC Operations, Inc. All rights reserved.
LIT-FMPDS REV 8/96.